



Colorado

SME Network Appliance

Based on
Broadcom BCM1125 & BCM5398

Colorado is a Network Appliance controller based on Broadcom BCM1125 network processor and BCM5398 eight port Giga bit switch.

Interface Masters can customize Colorado to your requirements in a short time.

FEATURES		
Processor		Broadcom BCM1125
LAN		Eight 10/100/1000 Ethernet ports
WAN		One 10/100/1000 Ethernet port
VOIP		2 Ports ¹
USB 2.0 Host		Three ports, Mini PCI style add on card ²
IP Security		PMC style add on card ³
802.11		Mini PCI style add on card
Memory	SDRAM	Up to 128 Mega bytes.
	FLASH	Up to 32 Mega bytes
	Serial EEPROM	Two, 16K byte each
Real Time Clock		Yes
Mini PCI ports		Two 32 bit, 66 MHz sockets.
Serial Ports (TTL Level)		One port
Power Input		12 volts DC

Dimension:

Length, 236 mm

Width, 184 mm

How to reach us

Interface Masters, Inc.

2381 Zanker Road, Suite 130, San Jose, CA 95131

Phone: 408-456-2545 Ext. 10

E-mail: info@interfacemasters.com

Home page: <http://www.interfacemasters.com>

¹ VOIP will be available on the later version of Colorado

² Please see IM800

http://www.interfacemasters.com/products/usb/mini_pci_3_ports/index.html

³ Please see Niagara 2100P

<http://www.interfacemasters.com/products/nic/niagara2100pc-5/index.html>

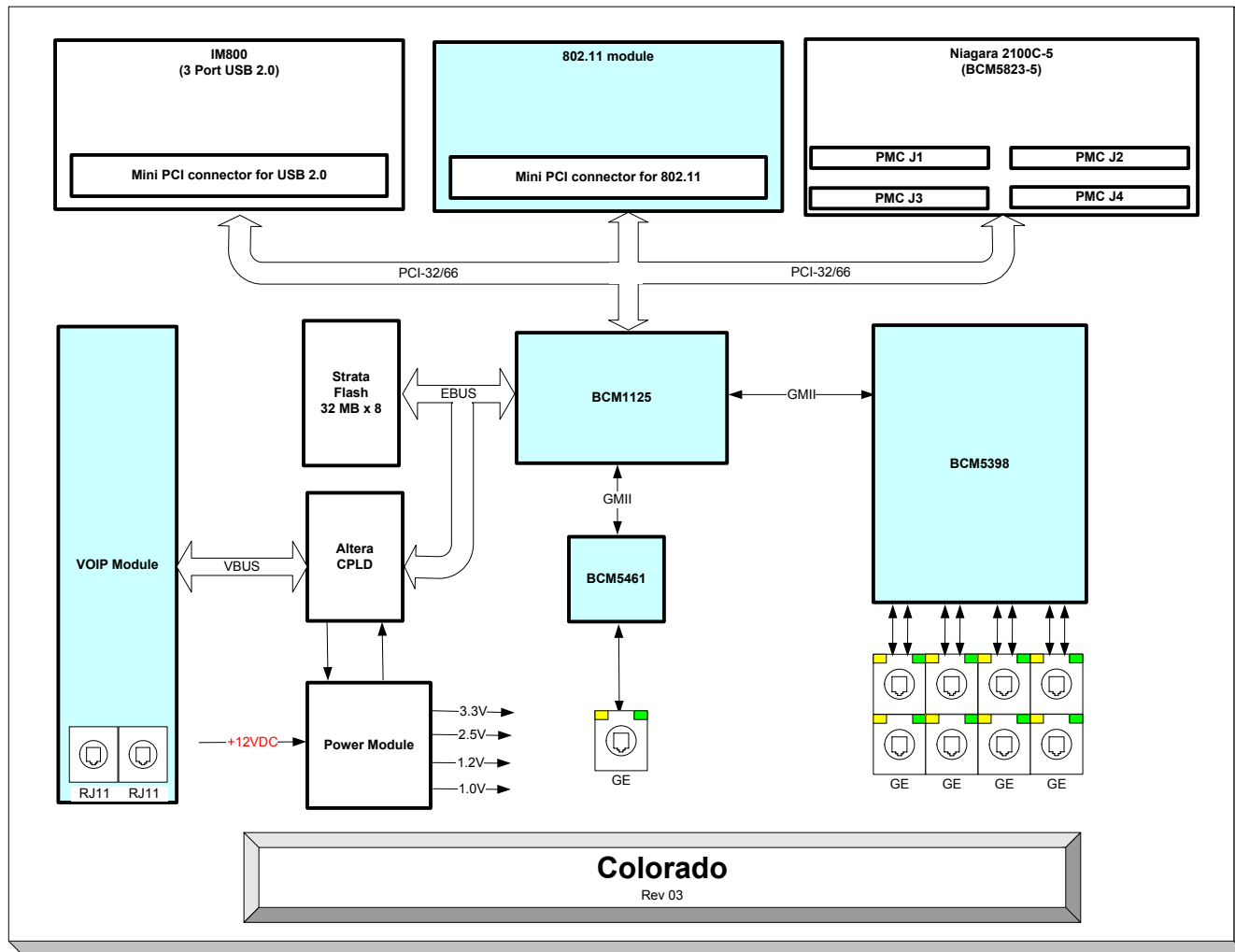


Figure 1, Block Diagram

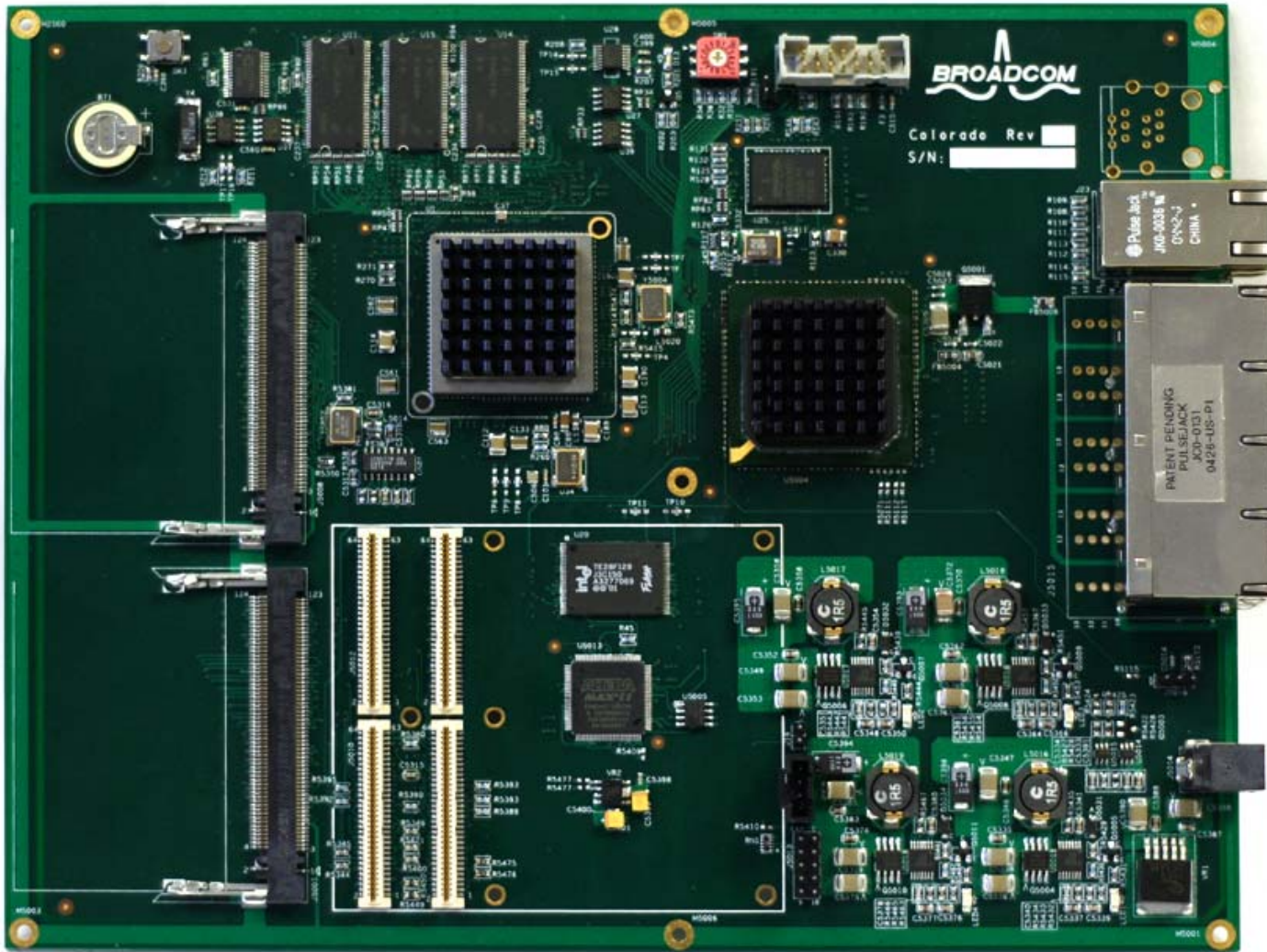


Figure 2, Fully Assembled Board